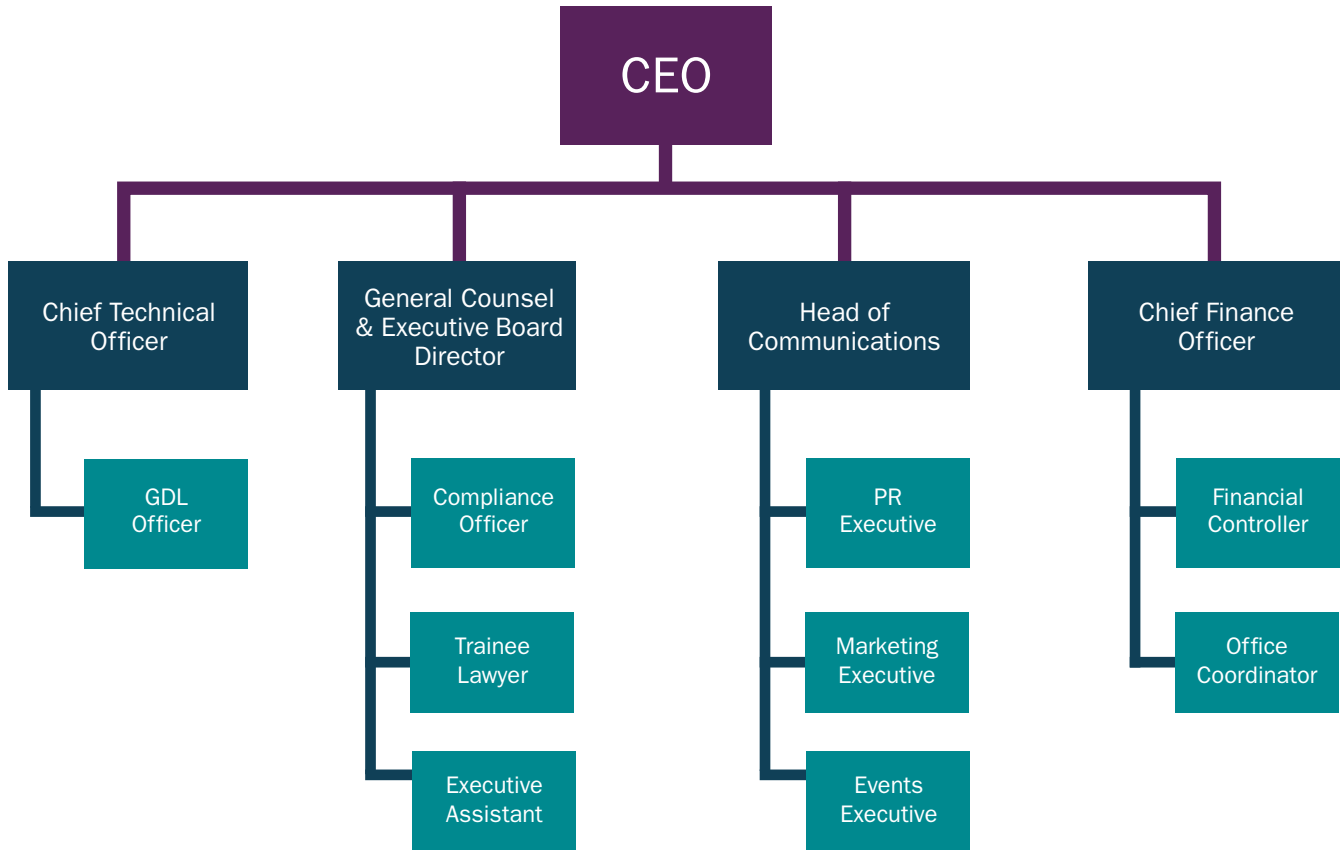


LBMA ORGANISATIONAL STRUCTURE



From left to right; Ed Blight Chief Finance Officer, Jonathan Spall Head of Communications, Simon Houghton-Dodd Compliance Officer, Aelred Connelly PR Executive, Emmy Richardson Office Coordinator, Sakhila Mirza General Counsel (& Executive Board Director), Ruth Crowell CEO, Stephanie Bennell Financial Controller, Jamilah Leigh Marketing Executive, Rachel Hart Trainee Lawyer, Neil Harby Chief Technical Officer and Jade Maisey Executive Assistant.

Varsha Peiris GDL Officer and Emily Brough Events Executive are also part of the team, but do not appear in the above photograph.